

Tile Patterns Version 1

Name: _____ Date: _____

1.) Study the tile pattern below.



Figure 1

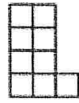


Figure 2

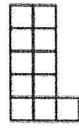


Figure 3

Create a Linear Equation in Slope-Intercept Form ($y=mx+b$).

2.) Given the following two clues, write the equation in Slope-Intercept Form.

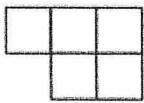


Figure #5

x	y
0	
1	
2	
3	7
4	
5	
6	

3.) Given the tile pattern, write the equation in Slope-Intercept Form.

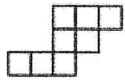


Figure 2

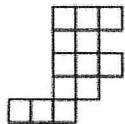


Figure 3

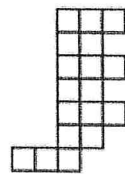


Figure 4

4.) Examine this tile pattern and answer the questions below.



Figure 1



Figure 2

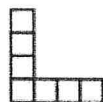


Figure 3

Write the linear equation in Slope-Intercept Form.

5.) What is the rule for the pattern below?



Figure 2



Figure 3

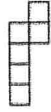


Figure 4

6.) What is the rule for the pattern?



Figure 1

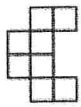


Figure 2

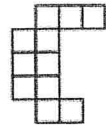


Figure 3

7.) The figures below show progressively larger arrangements of squares.



Figure 1

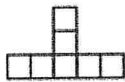


Figure 2

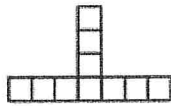


Figure 3

Write a rule:

8.) Read the information below about several lines. If there is enough information to draw a graph and find a rule, write "enough information" and find the rule. If there is not enough information, tell what you would need to find a rule.

- Line A has a slope of -2 and a y -intercept of 4 .
- Line B passes through the point $(2, 2)$.
- Line C passes through the origin and has a slope of -7 .
- Line D is parallel to the line $y = -5$.
- Line E passes through the points $(-4, -1)$ and $(1, 21)$.
- Line F passes through the point $(4, 2)$ and is parallel to the y -axis.

9.) For each situation, what would be the slope of the line representing the situation?

a.

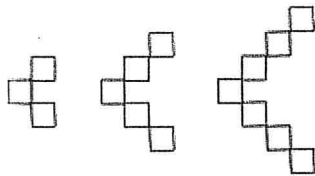
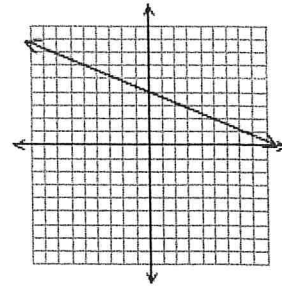


Figure 1 Figure 2 Figure 3

b.

x	y
-3	-2
-2	-5
-1	-8
0	-11
1	-14

c.



10.) Below are representations of three different linear functions. For each one, write the equation that corresponds to the given representation.

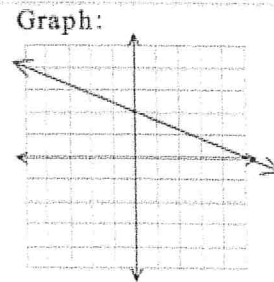
a. Table:

x	-3	-2	-1	0
y	$\frac{15}{2}$	7	$\frac{13}{2}$	6

b.

Situation:
When Josh planted his bean plant, it stood only 2 inches tall. Since then it has grown 3.25 inches every two weeks.

c.

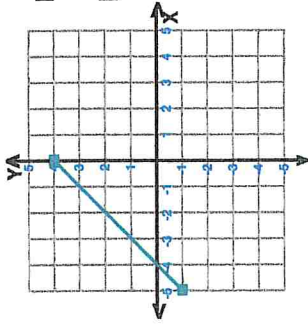


Teacher : _____

Date : _____

Domain and Range of Graphs

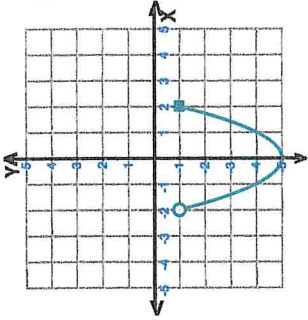
1)



Domain: _____

Range: _____

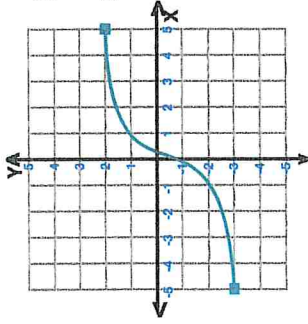
2)



Domain: _____

Range: _____

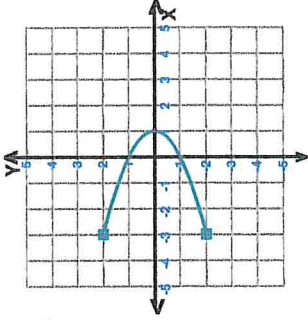
3)



Domain: _____

Range: _____

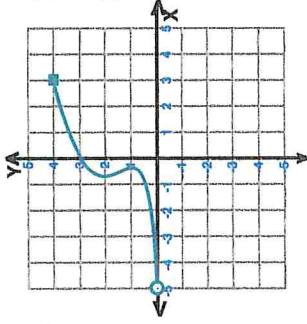
4)



Domain: _____

Range: _____

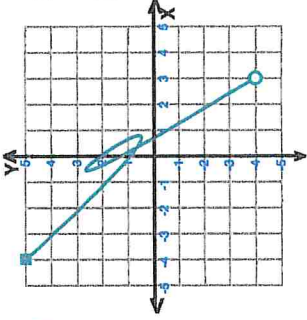
5)



Domain: _____

Range: _____

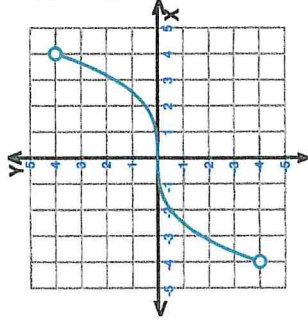
6)



Domain: _____

Range: _____

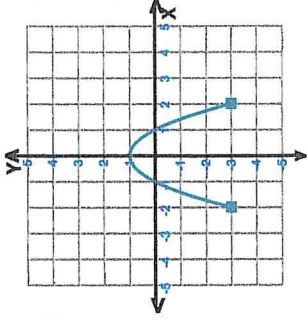
7)



Domain: _____

Range: _____

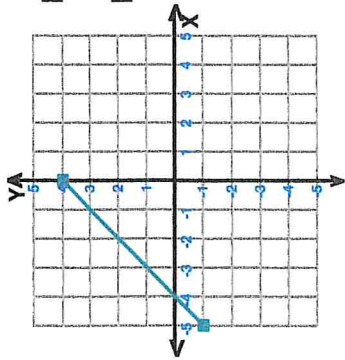
8)



Domain: _____

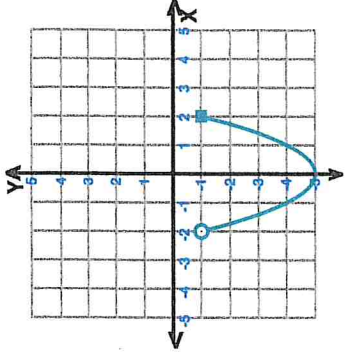
Range: _____





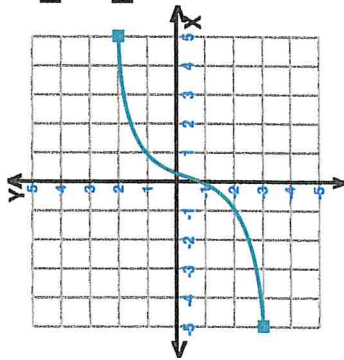
1)

Domain: _____
Range: _____



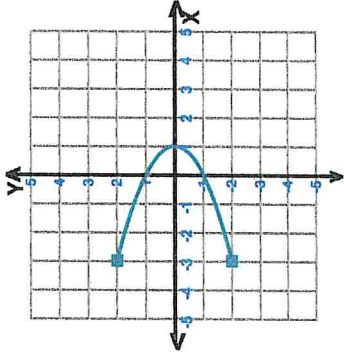
2)

Domain: _____
Range: _____



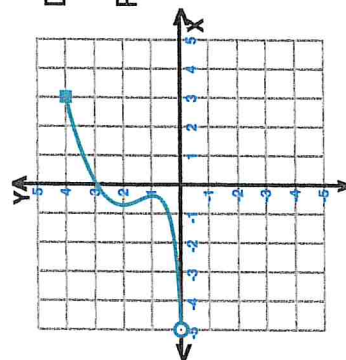
3)

Domain: _____
Range: _____



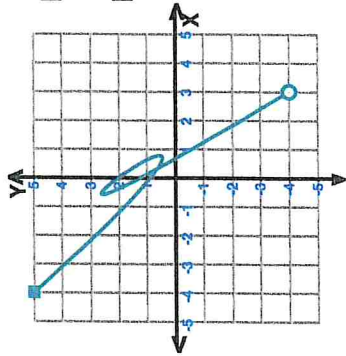
4)

Domain: _____
Range: _____



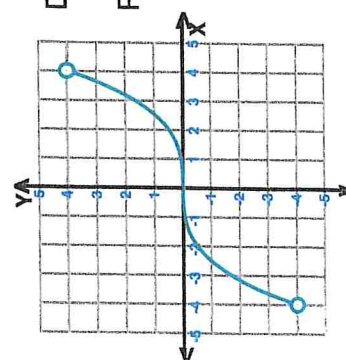
5)

Domain: _____
Range: _____



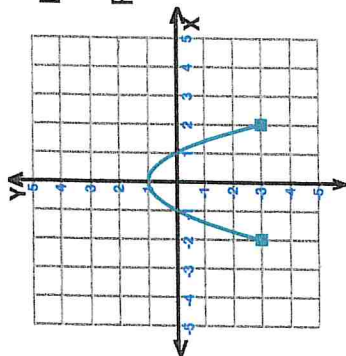
6)

Domain: _____
Range: _____



7)

Domain: _____
Range: _____



8)

Domain: _____
Range: _____



